

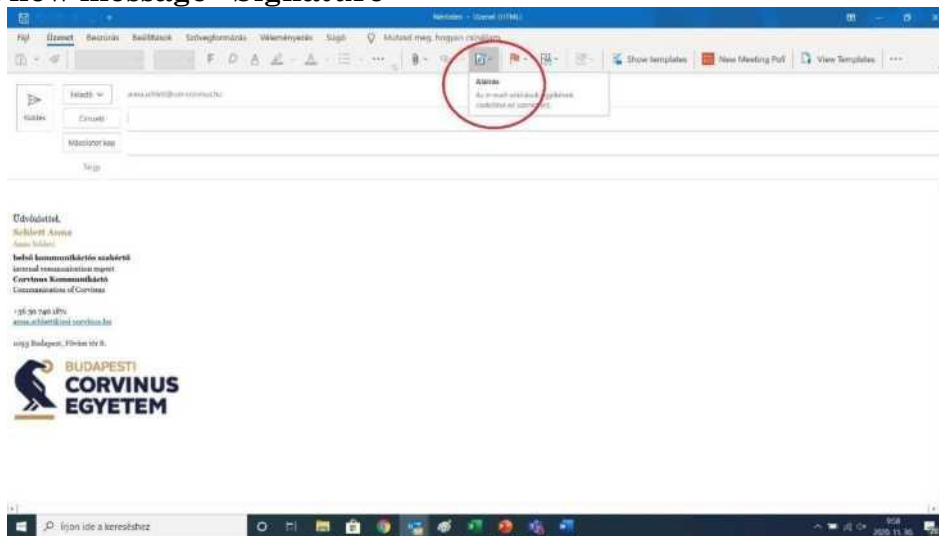
SETTING UP A CHRISTMAS GREETING IN ELECTRONIC MAIL

Insert an animated (moving) GIF

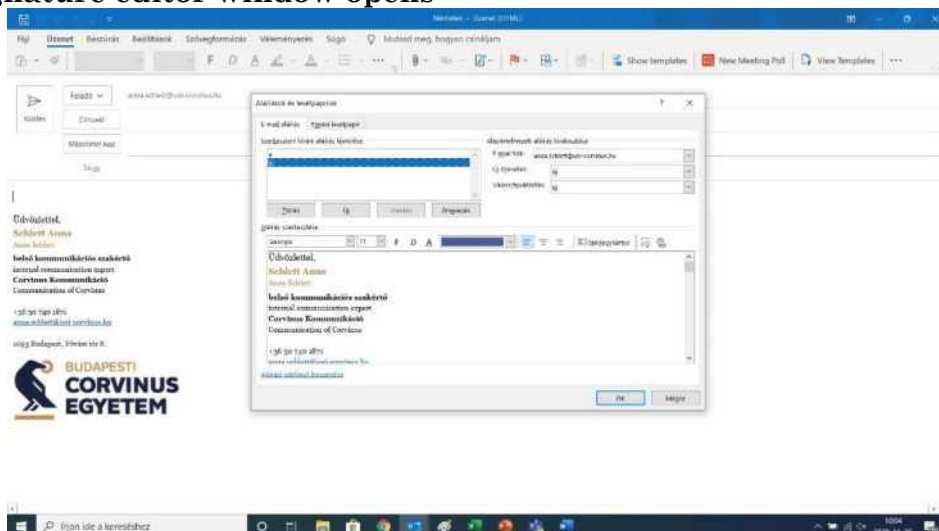
1. Save the selected gif to your computer.
2. Change your email signature as follows:

at the bottom of the signature, preferably under the Corvinus raven, paste the gif saved to your computer using the "Insert Image" option.

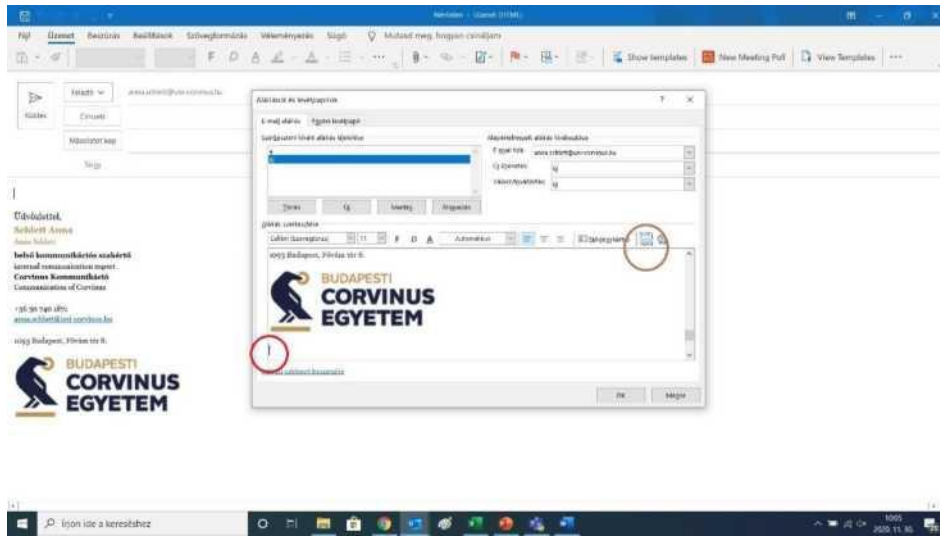
Open a new message> Signature



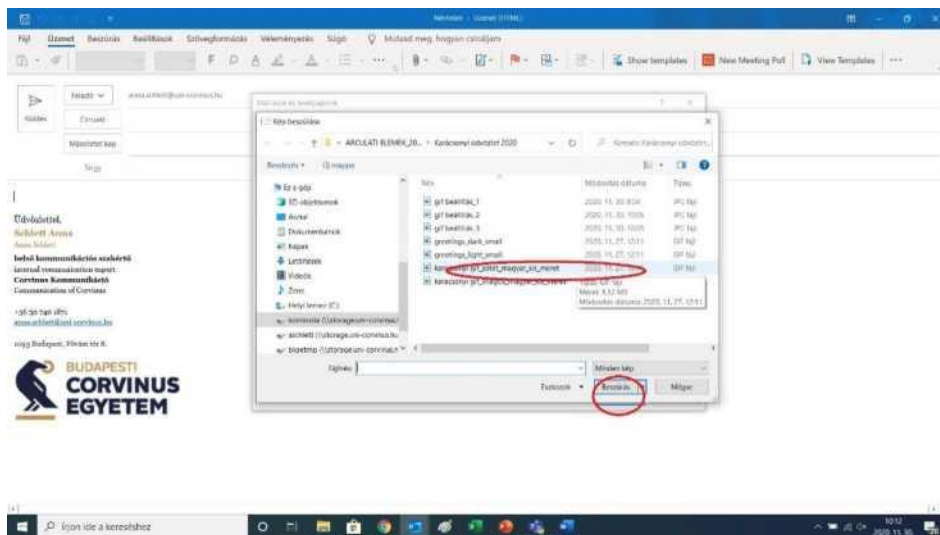
The signature editor window opens



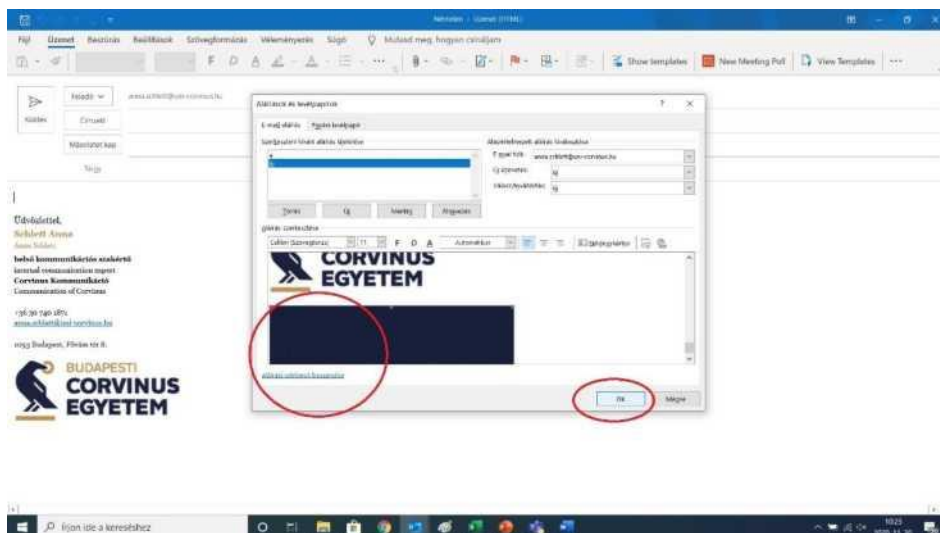
Within the Signature window, hover over Corvinus Raven> Select Insert Image



Select the gif file you saved to your machine> Insert



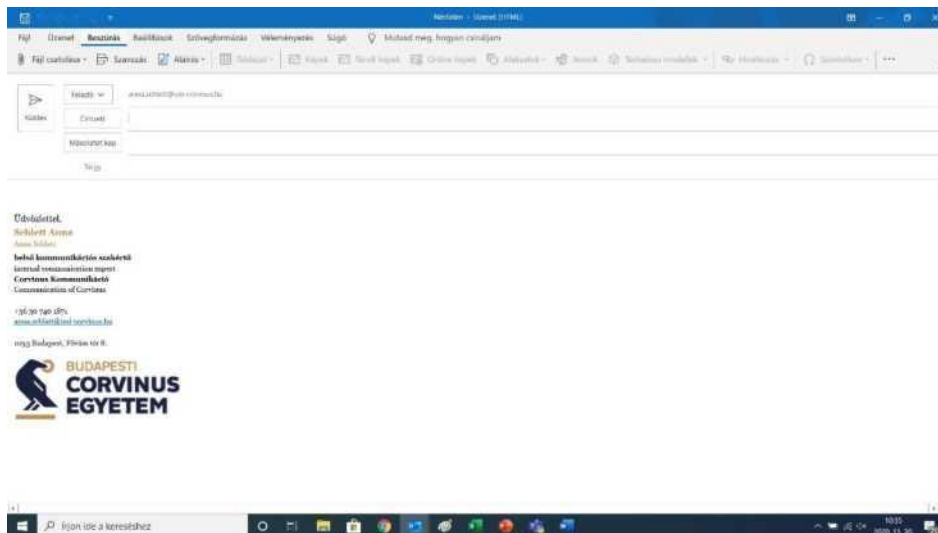
After pasting, save the new signature with OK



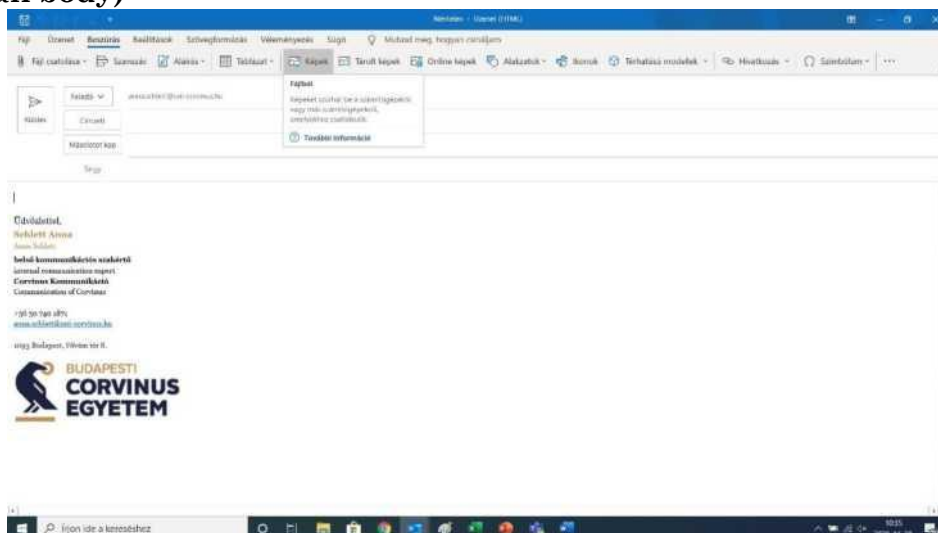
Insert a digital greeting card into an email

If you want to use a greeting card inserted in the body of your e-mail,

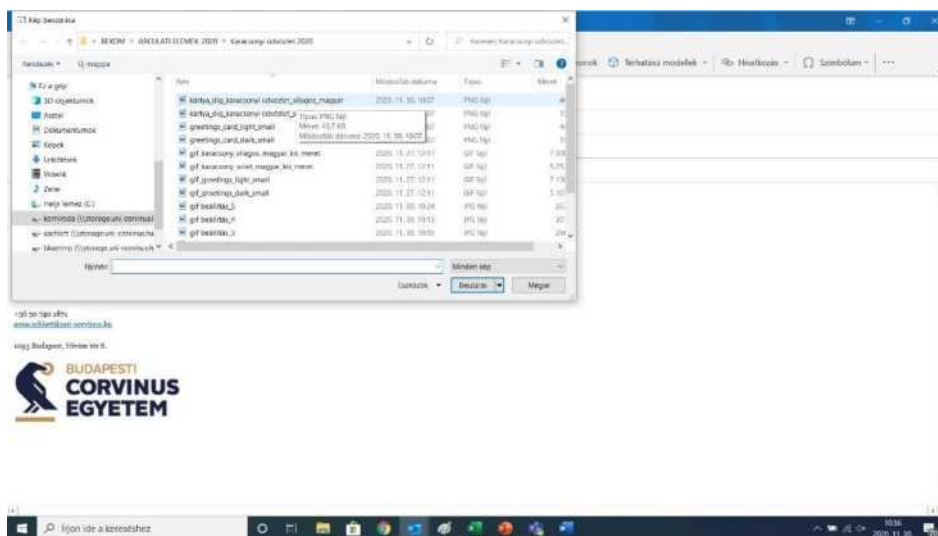
1. save the selected e-card png file to your computer
2. then open a new message:



Choose Images> From File (this button is only active if the cursor is inside the mail body)



Paste the png file saved on your machine with the "Insert" button into the e-mail.



Ready.
This process must be performed for each email.

